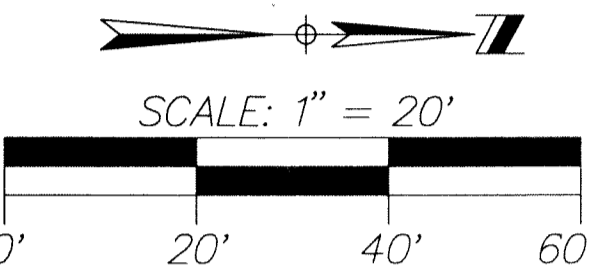


144

COUNTY OF PALM BEACH
STATE OF FLORIDA
THIS PLAT WAS FILED FOR RECORD AT _____
THIS _____ DAY OF _____
20____ AND DULY RECORDED IN PLAT BOOK NO. _____
ON PAGE _____
SHARON R. BOCK, CLERK OF CIRCUIT COURT
BY _____ D.C.

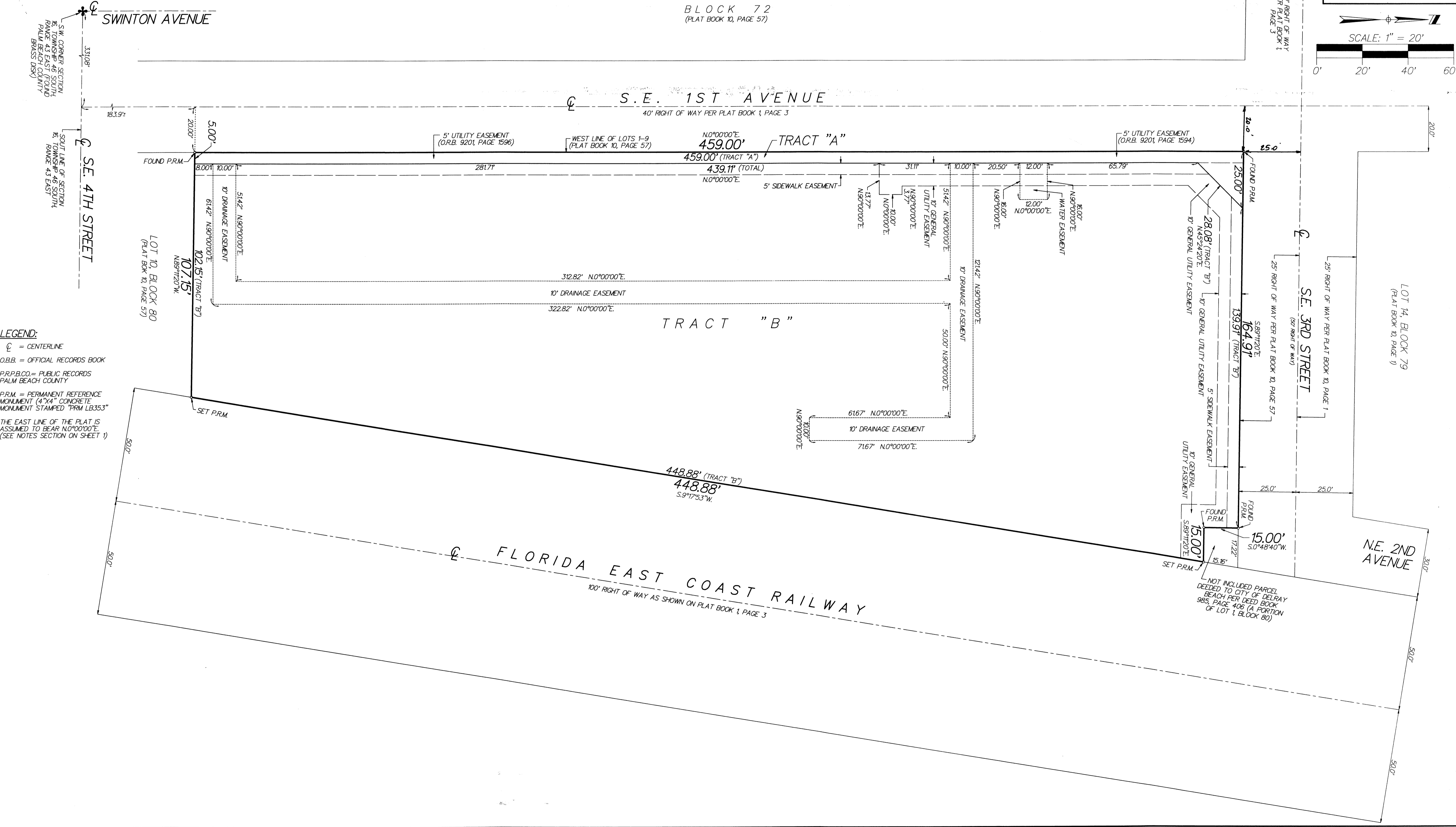
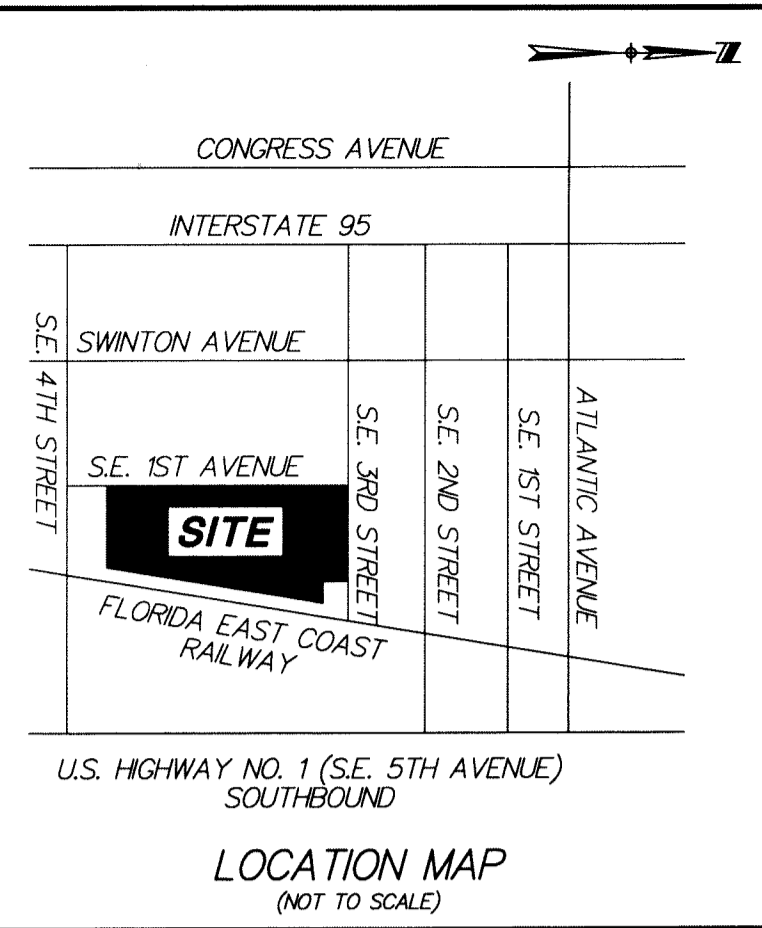


THREE HUNDRED ONE

BEING A REPLAT OF A PORTION OF LOT 1 AND ALL OF LOTS 2 THROUGH 9,
INCLUSIVE, BLOCK 80, SUBDIVISION OF BLOCK 72 AND THE WEST PORTION OF
BLOCK 80, PLAT BOOK 10, PAGE 57 (P.R.P.B.CO.) BEING IN SECTION 16,
TOWNSHIP 46 SOUTH, RANGE 43 EAST, CITY OF DELRAY BEACH, PALM
BEACH COUNTY, FLORIDA

SHEET 2 OF 2

BLOCK 72
(PLAT BOOK 10, PAGE 57)



LEGEND:
C = CENTERLINE
O.R.B. = OFFICIAL RECORDS BOOK
P.R.P.B.CO. = PUBLIC RECORDS
PALM BEACH COUNTY
P.R.M. = PERMANENT REFERENCE
MONUMENT (4"x4" CONCRETE
MONUMENT STAMPED "PRM LB353")
THE EAST LINE OF THE PLAT IS
ASSUMED TO BEAR N0°00'00"E.
(SEE NOTES SECTION ON SHEET 1)

NOT INCLUDED PARCEL
DEDICATED TO CITY OF DELRAY
BEACH PER DEED BOOK
985, PAGE 406 (A PORTION
OF LOT 1, BLOCK 80)